

2025-2026 STRATEGIC PLAN OVERVIEW

Bright Futures Roadmap Vision

All Jefferson, Gilpin & Clear Creek families have the support they need to promote their child's health and well-being for sustained success in school and in life.



Our Values

- Strong Families, Strong Community
- Equitable, High-Quality Experiences
- Supported Adults Across Communities
- Sustained Commitment and Coordinated Services
- Continuous Improvement

MISSION STATEMENT:

Triad Bright Futures partners with the community to advance quality, equitable early childhood experiences for all families.

2025–2026 STRATEGIC PRIORITIES



Build inclusive networks and support partner capacity to implement projects that advance the Bright Futures Roadmap.



Ensure maximum organizational sustainability of Triad Bright Futures.







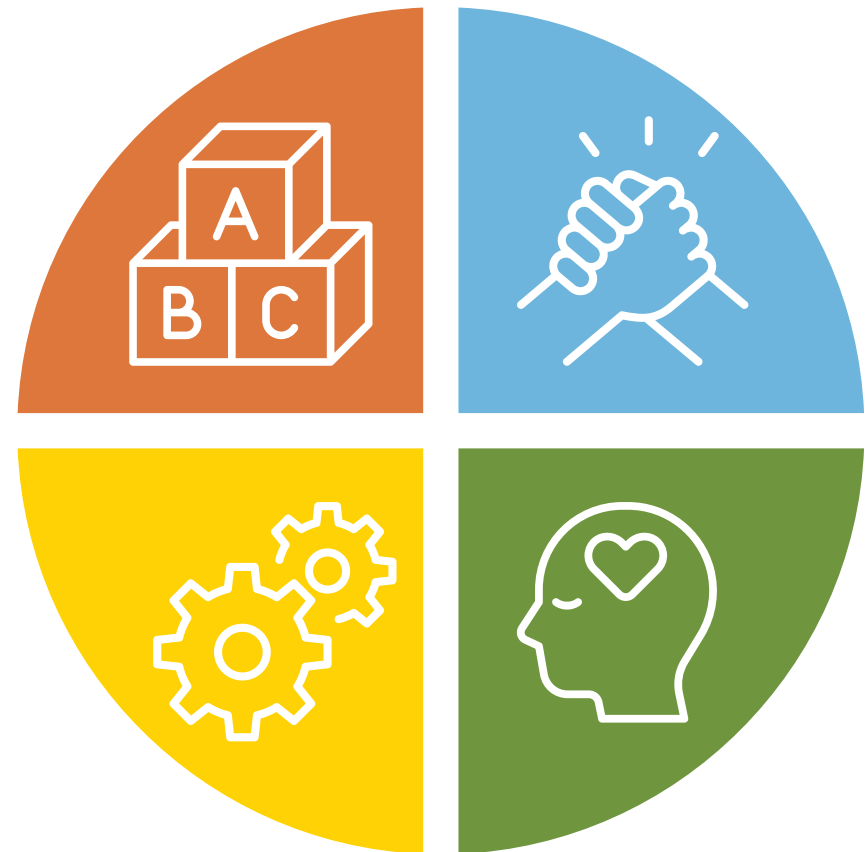
Identify and advance policy efforts and changes in practice that leverage community strengths, expand access to services and improve economic opportunities for families with young children.



Bright Futures Roadmap:

4 Cornerstones

-  **A variety of high-quality early care and education options** that meet family needs, provided through a mixed-delivery system.
-  **Home visiting programs that meet diverse family needs** and ensure that parents are supported in their role as a child's first and most important teacher.
-  **Families, child care programs, providers have access to mental health consultation** to fully support the social-emotional development of children and mental health of adults.
-  **A robust screening, assessment, and referral system** that works to address physical, social-emotional, behavioral, and social determinants of health.





**BRIGHT
FUTURES**

GOAL OF THE STRATEGIC PLAN

Parents and caregivers of young children are supported to have equitable access to resources and information, so that their children and our communities prosper.

PRIORITY ACTIONS JANUARY 2025–DECEMBER 2026

Build inclusive networks and support partner capacity to implement projects that advance the Bright Futures Roadmap.

- Effectively implement UPK to ensure equitable access for families
- Support early childhood workforce development efforts across all Cornerstones
- Expand capacity for organizations to reach families in directly impacted communities with culturally responsive services through Cornerstone projects and goals
- Advance community-driven solutions from the Community Needs Assessment in Gilpin & Clear Creek Counties

Ensure maximum organizational capacity and sustainability of Triad Bright Futures.

- Diversify Funds
- Increase evaluation capacity
- Recruit, retain and develop highly qualified Triad Bright Futures employees
- Increase public awareness of Triad Bright Futures by cultivating communication strategies that are accessible and driven by community needs

Advance policy efforts and changes in practice that leverage community strengths, expand access to services and improve economic opportunities for families

- Develop policy efforts from Jeffco cornerstone groups, the mountain communities and feedback from families
- Promote and align with state early childhood frameworks and plans
- Support legislative efforts that align with TBF's vision for early childhood in Jefferson, Gilpin and Clear Creek Counties