

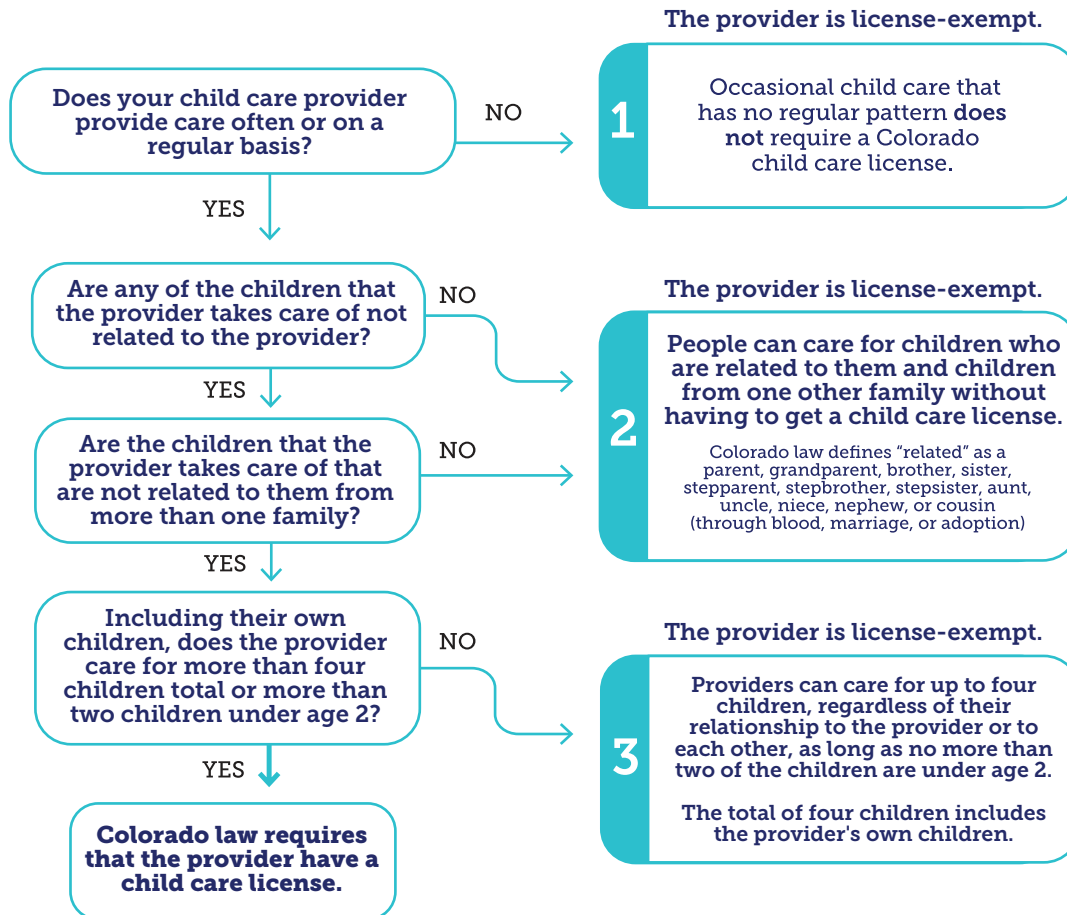


How Do I Know If My Child Care Provider Needs a License?

See if your child's provider is required to have a Colorado child care license.

Colorado's licensing rules for providing child care are designed to protect the health and safety of the children receiving care.

There are **only three types** of child care situations that do not require a license. These care situations are "license-exempt." Providing care outside of the three license-exempt options requires that providers have a Colorado child care license.



Did You Know?

- Nanny shares and other informal types of care are still required to follow child care licensing rules.
- A child care license is connected to both the person providing care and the location where the care is provided. That means if a child care program moves, the provider needs to get a license for the new location.

Need Help Finding a Licensed Child Care Program?

To request help finding child care, scan the QR code and fill out the form.



You can also search for a program online at [Colorado Shines.com/search](https://coloradoshines.com/search) or call the Colorado Shines Child Care Resource and Referral phone line at 877.338.2273 to talk to a child care navigator.